

Pilot Internet Hub Project for Migrant Housing

Participate in this pilot project and receive a free “Internet Hub” for your migrant housing area

What is an internet hub?

An internet hub is a combination of a cradlepoint router, antenna, and unlimited data plan in a centralized location in the migrant housing area.

Why set up an internet hub?

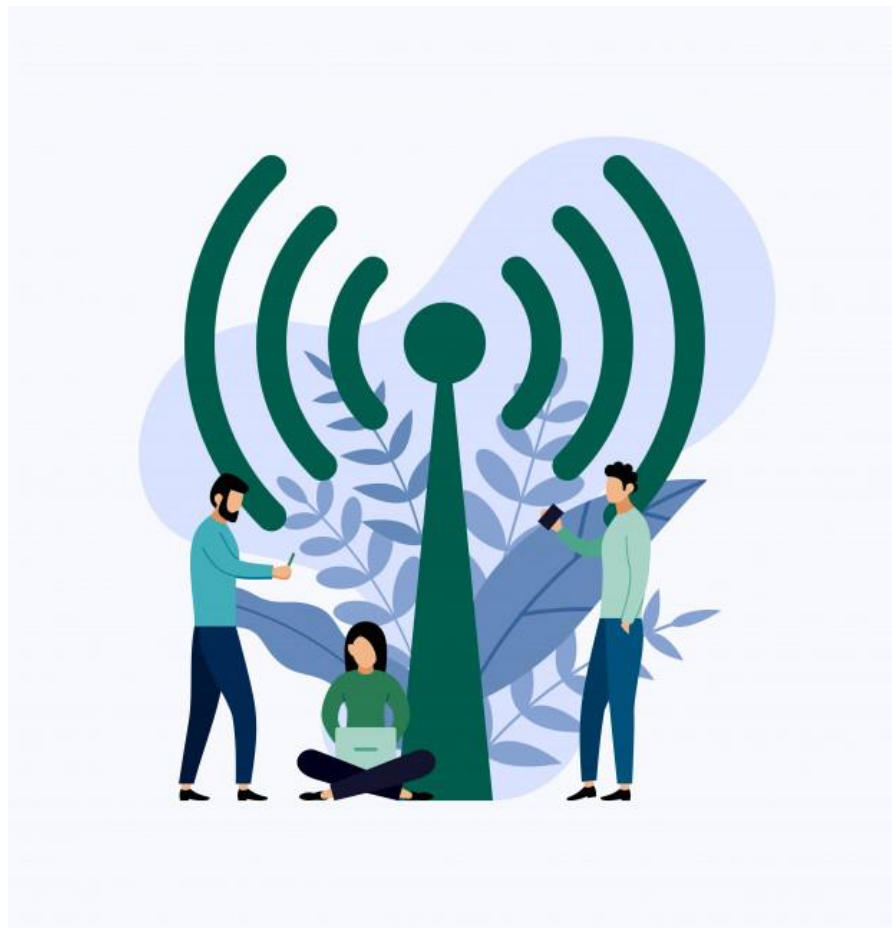
An internet hub allows farmworkers to access important information online, attend telemedicine visits, improves on farm communication, and the overall well-being of farmworkers.

How to participate?

Qualifying farms will be assessed through our partnership with the NC Agromedicine Institute - Migrant Housing Internet Connectivity Program.

Farms with 20 or more workers in the same location and without any other internet connection are encouraged to participate.

For more information contact Robin Tutor –
tutorr@ecu.edu



Sponsored by the North Carolina Farmworker Health Program in collaboration with the North Carolina Agromedicine Institute

 **NC FARMWORKER HEALTH PROGRAM**

